



Surrey Heath Borough - Installation Update

Issue Date: November 2021

Please visit www.slpproject.co.uk for the latest updates or simply scan the QR code below. You can also keep up to date with the latest news by following us on Facebook **@SLPConstructionProject** Twitter **@ConstructionSLP** or by signing up to our newsletter at slpproject.co.uk/signup to get regular updates.

Current activity

Vegetation clearance in Colony Bog & Bagshot Heath to prepare the working area. Vegetation clearance is undertaken in the winter months to avoid bird nesting season. Installation will take place at the end of Summer 2022.

Works in Chobham Common

- Installation of three trenchless sections of replacement pipeline across Chobham Common,
- installation of Heras-style fencing around the working areas. These areas are for the launch and reception pits of the trenchless crossings and pipe stringing areas,
- two compounds are in use in the common, and
- improvement works are being done on the access track.

Upcoming works

- From December 2021, we will start construction of the compounds located at Turf Hill (5E) and Halebourne Lane (5F),
- we will start vegetation clearance between Halebourne Lane and Windlesham Road in December 2021, followed by open-cut pipe installation starting January 2022,
- trenchless crossing installation under Windlesham Road (TC023) is due to start January 2022,
- vegetation clearance at SC Johnson Land will continue in January 2022, and
- in January 2022, we will start vegetation clearance from Windlesham Road to Steep Hill, followed by open-cut works which are due to start February 2022.

If you have any additional questions email us at info@slpproject.co.uk
You can also keep up to date with the latest news by following us on Facebook **@SLPConstructionProject** Twitter **@ConstructionSLP** or by signing up to our newsletter at slpproject.co.uk/signup to get regular updates.



Keeping 100 road tankers off the road every day



*Based on Esso's 2015 data for its existing pipeline

For more information please visit www.slpproject.co.uk

Surrey Heath Borough Council

Once installed, the pipeline will be a quiet neighbour and will go unnoticed by most people.

Specialist techniques such as hand digging and airspades will be used to install around tree roots.

Vegetation will be replanted once construction is complete.

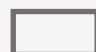
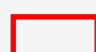
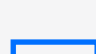
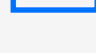
Parks will remain open during installation.

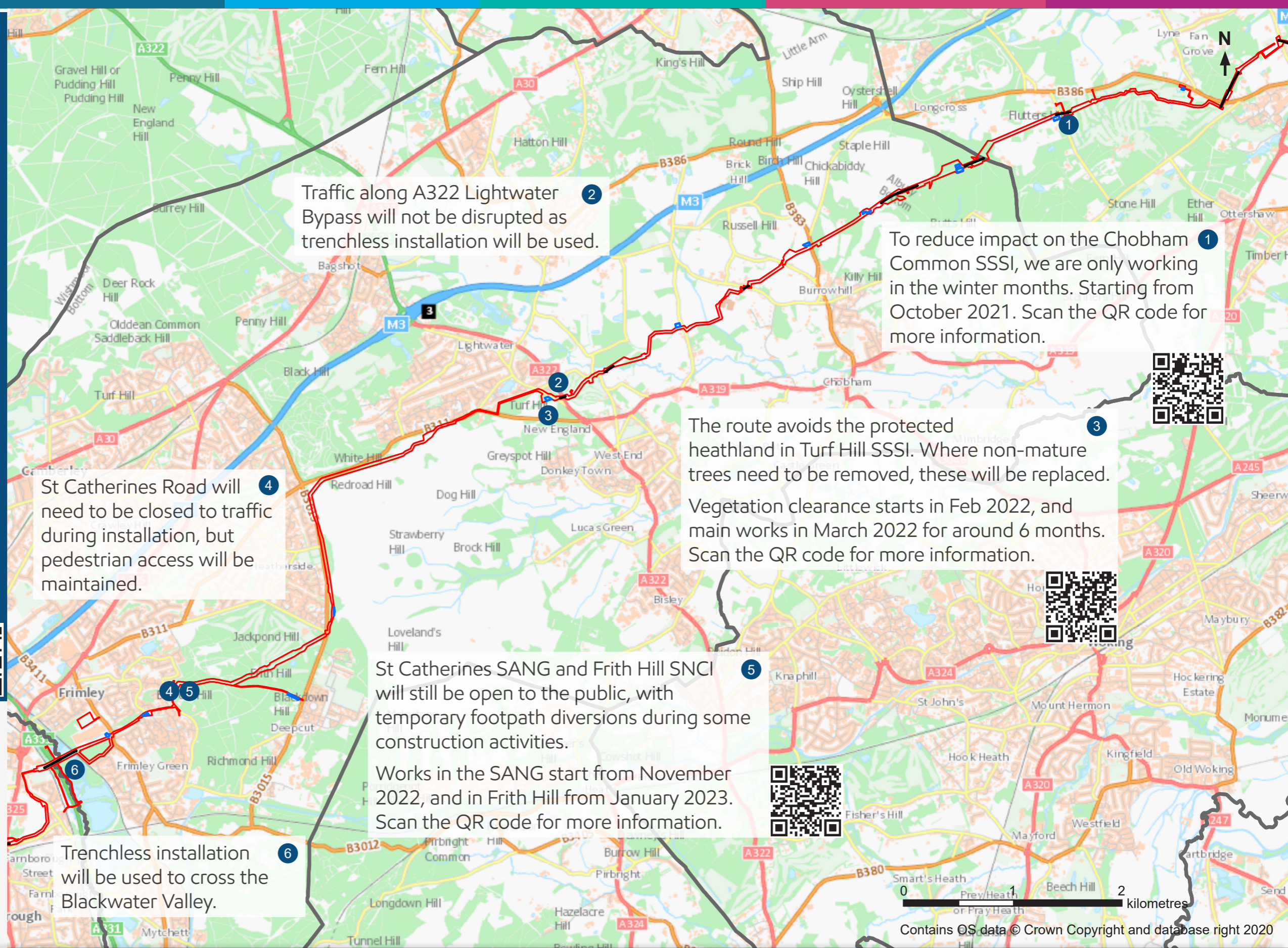
Public Rights of Way, such as footpaths, will remain open with diversions.

Scan the QR code to visit our interactive map for all information about our installation work.



Legend

-  District boundary
-  Maximum limit of the working area, also known as Order Limits
-  Temporary construction compounds
-  Trenchless crossings



This project is replacing approximately 90km of our underground aviation fuel pipeline from Boorley Green, Hampshire to our West London Terminal storage facility in Hounslow. Pipelines are a safe, secure and low-impact way of transporting fuel. The pipeline will keep 100 road tankers off the road every day.*
**based on Esso's 2015 data for its existing pipeline*

For regular updates, sign up to our newsletter at www.slpproject.co.uk



Southampton to London Pipeline Project



Phasing of works – Surrey Heath

Construction Work Area	2021					2022												2023										
	Aug	Sep	Oct	Nov	Dec	Jan	Feb	Mar	Apr	May	Jun	Jul	Aug	Sep	Oct	Nov	Dec	Jan	Feb	Mar	Apr	May	Jun	Jul	Aug	Sep	Oct	
Trenchless Crossing TCO20 - Blackwater Valley																												
SC Johnson Land			ST			VC																						
Compound 5A off Frimley Green Road																												
Frimley Green Road Roundabout																												
Compound 5B off Balmoral Drive																												
Balmoral Drive																												
St Catherines Road																												
St Catherines SANG																												
Compound 5C - St Catherines SANG																												
Frith Hill																												
Compound 5U Frith Hill																												
Pine Ridge Golf Course																												
Compound 5D - Colony Bog & Bagshot Heath																												
Colony Bog & Bagshot Heath																												
Red Road																												
Compound 5E, Guildford Road ,Turf Hill																												
Turf Hill																												
Trenchless Crossing TC021 - Lightwater Bypass A322																												
Windlemere SANG																												
Blackstroud Lane East to Halebourne Lane																												
Trenchless Crossing TC022 - Hale Bourne																												
Compound 5F off Halebourne Lane																												
Halebourne Lane to Windlesham Road																												
Trenchless Crossing TC023 - Windlesham Road																												
Windlesham Road to Steep Hill																												
Steep Hill to Windsor Road																												
Compound 5G off Windsor Road																												
Chobham Common																												
Compound 5H - Chobham Common																												
Trenchless Crossing TC024 - Chobham Common																												
Trenchless Crossing TC025 - Chobham Common																												
Compound 5I - Chobham Common																												
Trenchless Crossing TC026 - Chobham Common																												

Key

- Advanced works / ecology mitigation
- ST Strimming
- VC Tree and Hedge Clearance
- Trenchless crossing including work area and access
- Open cut works rural / semi rural
- Open cut streetworks
- Compound in use
- Reinstatement
- SE Seeding
- PL Planting

We are now releasing a local, area specific timeline for installation. This gives an indication of when we expect to be working in each area. We'll let you know at least two months in advance of any work starting and provide further detail of expected duration. Since we are currently progressing detailed design, the timetable may be subject to some additional change as we finalise our plans and work to reduce overall disruption during construction. Please be assured that if our plans change, we'll keep you informed. Once the pipeline is buried, it will be a quiet neighbour.



Community charter



Plenty of notice

We'll let you know at least two months in advance of any work starting and if our plans change, we'll let you know.



Here to help

We'll let you know at least two months in advance of any work. Our local team will be available by phone or email to answer any questions you have.



Information directly to you

Our local area e-newsletter and alerts will let you know what's happening. Where we are working in streets or roads, we'll operate a dedicated text service to inform interested residents.



In your area

We'll make sure information about installation in your area is easy to find on our website, in a way that is easy for you to identify what's important to you. In some public parks, we'll hold pop up events to meet with those using the facilities and give out information about our installation plans.



Talking to landowners

All landowners affected by the installation will have a dedicated member of our lands team to contact to discuss our work.



Open and honest

We'll be clear about our works and any disruption that may take place.



Safe and secure

We'll keep our team safe, and we'll keep you safe. Our commitment to health and safety is at the heart of our business and we'll make sure your safety is not impacted by our work.



Well managed sites

Our sites will use fencing suitable to the location and we'll use things like wheel-washing on our vehicles to keep the surrounding roads clean.

